

1000 BTUH | INDOOR/OUTDOOR, UL TYPES 12, 4 & 4X AVAILABLE

Engineered & manufactured to endure the most difficult of environments and applications.

Thermal Edge air conditioners will exceed environmental requirements in applications like Steel, Food Processing, Petro-Chemical, Cement, Paper & Pulp and Plastics



Digital Temperature Controller

- Programmable set point and temperature controls
- Visible Error and/or alarm messaging
- System status indication & keypad lockout function

Active Condensate Evaporation System

- Constant elimination of condensate
- Increases unit efficiency by pre-cooling refrigerant

Key Design Features

- Sloped top to allow for water runoff
- Designed with rigid chassis and seam welded shroud
- Thoughtful interior design for easy maintenance
- Narrow body style fits on 12" enclosure

Unit Efficiency

- Temperature operated condenser fan reduces power inrush and saves energy
- Highly efficient rotary compressor
- Fully insulated & sealed cabinet
- Thermal Expansion Valve to maintain cooling capacity over a broad ambient temperature range

Compressor Protection System

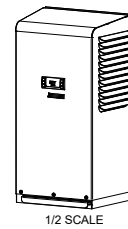
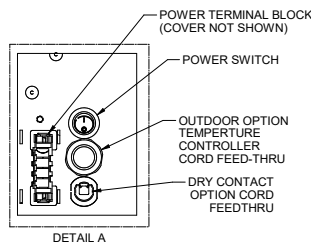
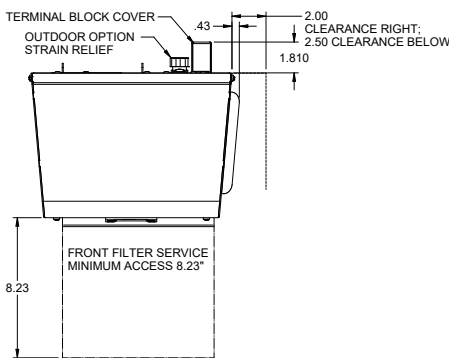
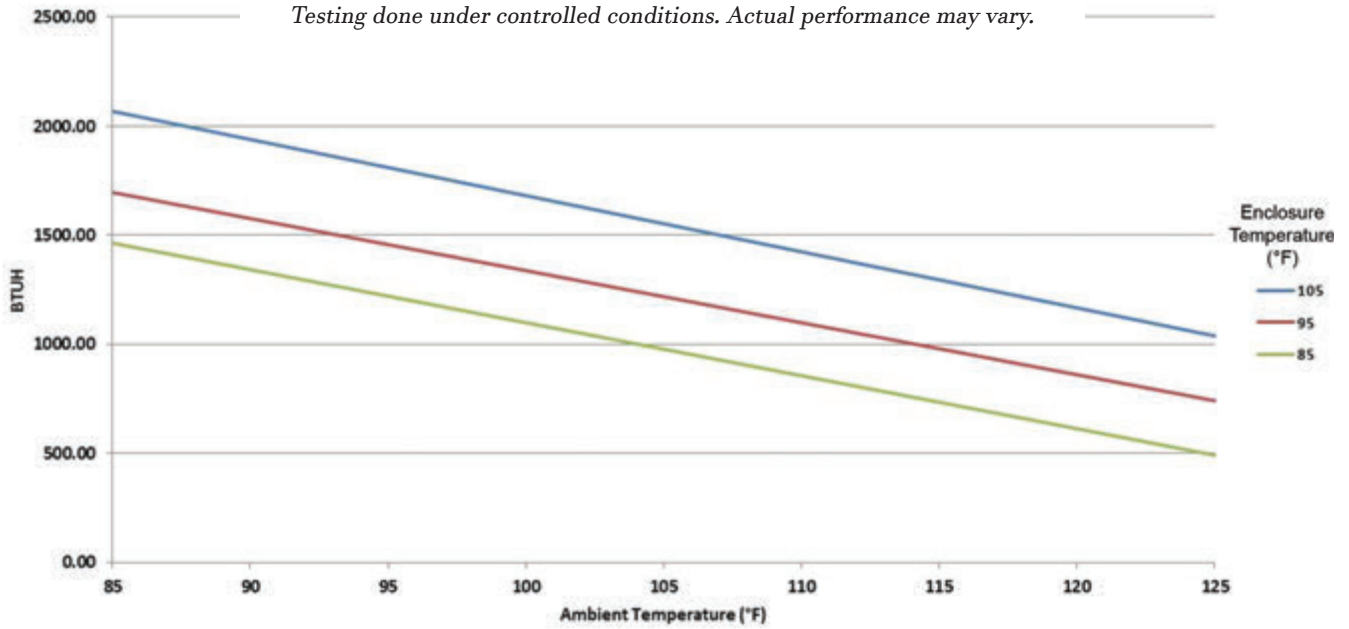
- High & Low refrigerant cutouts with fault indication
- Compressor anti short cycle protection
- Compressor run capacitors reduce power inrush, save energy and increase compressor life

OPTIONS:

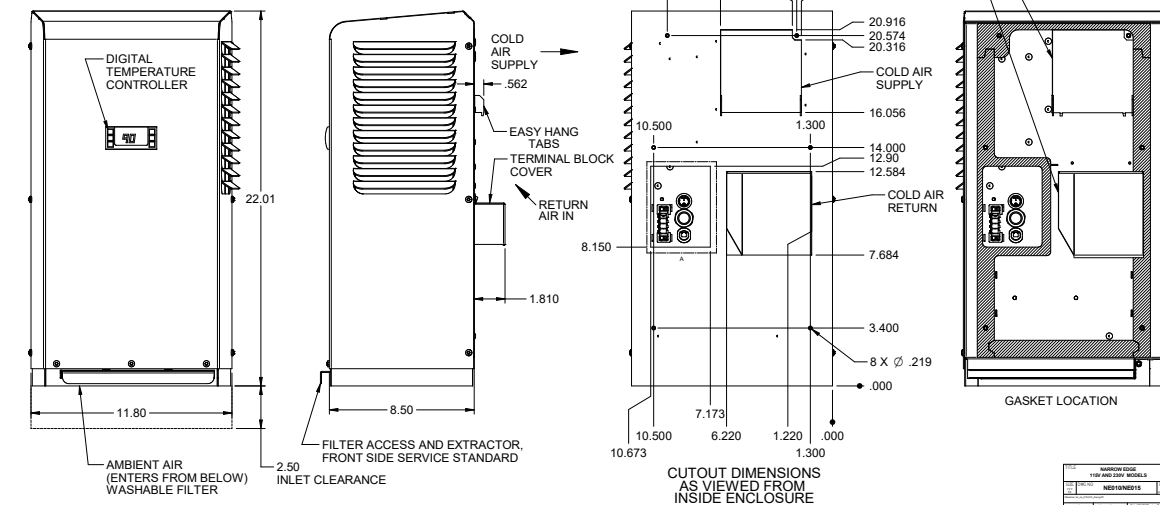
- High Ambient
- Remote Controller
- Corrosion Protection
- Controller Programming
- Open Door Kill Switch
- Remote Control/Monitor
- Extended Temp. Probe
- Dry Contact
- Custom Finish
- Diagnostics

| Model | UL Type | BTU/Hour | Material | Voltage/Phase/Hz. | Running Amps | Max. Amb. Temp. | H x W x D | Unit Weight (lbs.) |
|--------------|---------|----------|----------------------|-------------------|--------------|-----------------|--------------------|--------------------|
| NE01012612 | 12 | 1000 | Powder coated steel | 115/1/60 | 3.44 | 125°F | 22" x 11.8" x 8.5" | 51 |
| NE01012604 | 4 | 1000 | Powder coated steel | 115/1/60 | 3.44 | 125°F | 22" x 11.8" x 8.5" | 51 |
| NE0101264X | 4X | 1000 | Stainless steel | 115/1/60 | 3.44 | 125°F | 22" x 11.8" x 8.5" | 51 |
| NE0101264XL4 | 4X | 1000 | Mill finish aluminum | 115/1/60 | 3.44 | 125°F | 22" x 11.8" x 8.5" | 41 |
| NE01023612 | 12 | 1000 | Powder coated steel | 230/1/60 | 2.67 | 125°F | 22" x 11.8" x 8.5" | 53 |
| NE01023604 | 4 | 1000 | Powder coated steel | 230/1/60 | 2.67 | 125°F | 22" x 11.8" x 8.5" | 53 |
| NE0102364X | 4X | 1000 | Stainless steel | 230/1/60 | 2.67 | 125°F | 22" x 11.8" x 8.5" | 53 |
| NE0102364XL4 | 4X | 1000 | Mill finish aluminum | 230/1/60 | 2.67 | 125°F | 22" x 11.8" x 8.5" | 43 |

Testing done under controlled conditions. Actual performance may vary.



UL File #SA32252



ATTENTION: If ordering a replacement for a Thermal Edge air conditioner, please include the part number and serial number of the unit being replaced in your order. This will ensure that we ship a replacement that is compatible with the cutout dimensions and power connection features of the older model. All information subject to change without notice.