

**1000 BTUH | INDOOR/OUTDOOR, UL TYPES 12, 4 & 4X AVAILABLE**

Engineered & manufactured to endure the most difficult of environments and applications.

Thermal Edge air conditioners will exceed environmental requirements in applications like Steel, Food Processing, Petro-Chemical, Cement, Paper & Pulp and Plastics.



### Digital Temperature Controller

- Programmable set point and temperature controls
- Visible Error and/or alarm messaging
- System status indication & keypad lockout function

### Active Condensate Evaporation System

- Constant elimination of condensate
- Increases unit efficiency by pre-cooling refrigerant

### Key Design Features

- Sloped top to allow for water runoff
- Designed with rigid chassis and seam welded shroud
- Thoughtful interior design for easy maintenance
- Narrow body style fits on 12" enclosure

### Unit Efficiency

- Temperature operated condenser fan reduces power inrush and saves energy
- Highly efficient rotary compressor
- Fully insulated & sealed cabinet
- Thermal Expansion Valve to maintain cooling capacity over a broad ambient temperature range

### Compressor Protection System

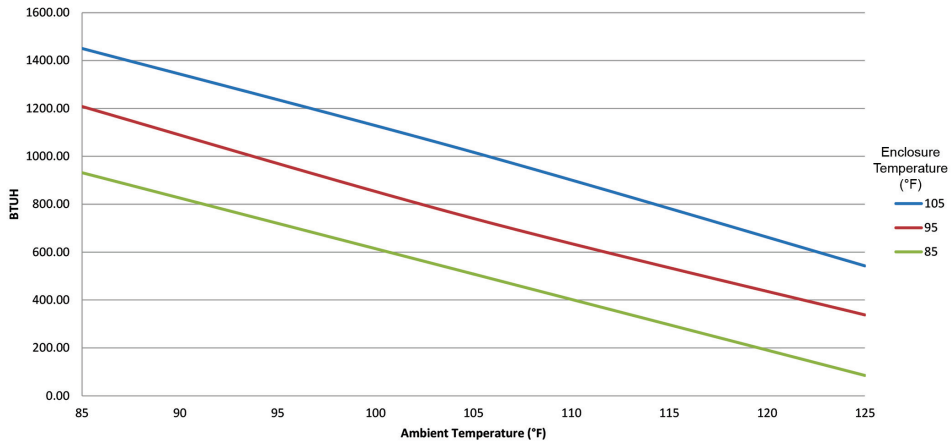
- High & Low refrigerant cutouts with fault indication
- Compressor anti short cycle protection
- Compressor run capacitors reduce power inrush, save energy and increase compressor life

### OPTIONS:

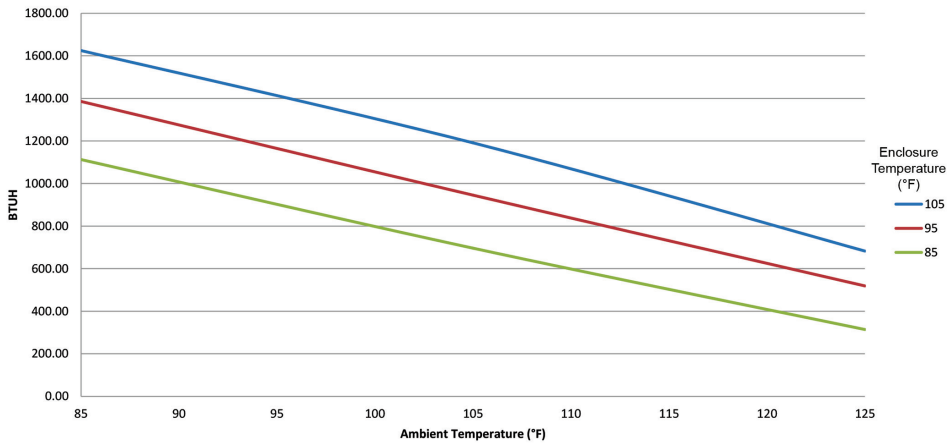
- High Ambient
- Remote Controller
- Corrosion Protection
- Dry Contact
- Controller Programming
- Open Door Kill Switch
- Custom Finish
- Extended Temp. Probe
- Remote Control/Monitor
- Diagnostics

Model	UL Type	BTU/Hour	Material	Voltage/Phase/Hz.	Running Amps	Max. Amb. Temp.	H x W x D	Weight (lbs.) Unit/Ship
NE01010512	12	1000	Powder coated steel	100/1/50	2.3	125°F	22" x 11.8" x 8.5"	53 / 65
NE01010504	4	1000	Powder coated steel	100/1/50	2.3	125°F	22" x 11.8" x 8.5"	53 / 65
NE0101054X	4X	1000	Stainless steel	100/1/50	2.3	125°F	22" x 11.8" x 8.5"	53 / 65
NE0101054XL4	4X	1000	Mill finish aluminum	100/1/50	2.3	125°F	22" x 11.8" x 8.5"	43 / 55
NE01020512	12	1000	Powder coated steel	200/1/50	1.9	125°F	22" x 11.8" x 8.5"	53 / 67
NE01020504	4	1000	Powder coated steel	200/1/50	1.9	125°F	22" x 11.8" x 8.5"	53 / 67
NE0102054X	4X	1000	Stainless steel	200/1/50	1.9	125°F	22" x 11.8" x 8.5"	53 / 67
NE0102054XL4	4X	1000	Mill finish aluminum	200/1/50	1.9	125°F	22" x 11.8" x 8.5"	43 / 57

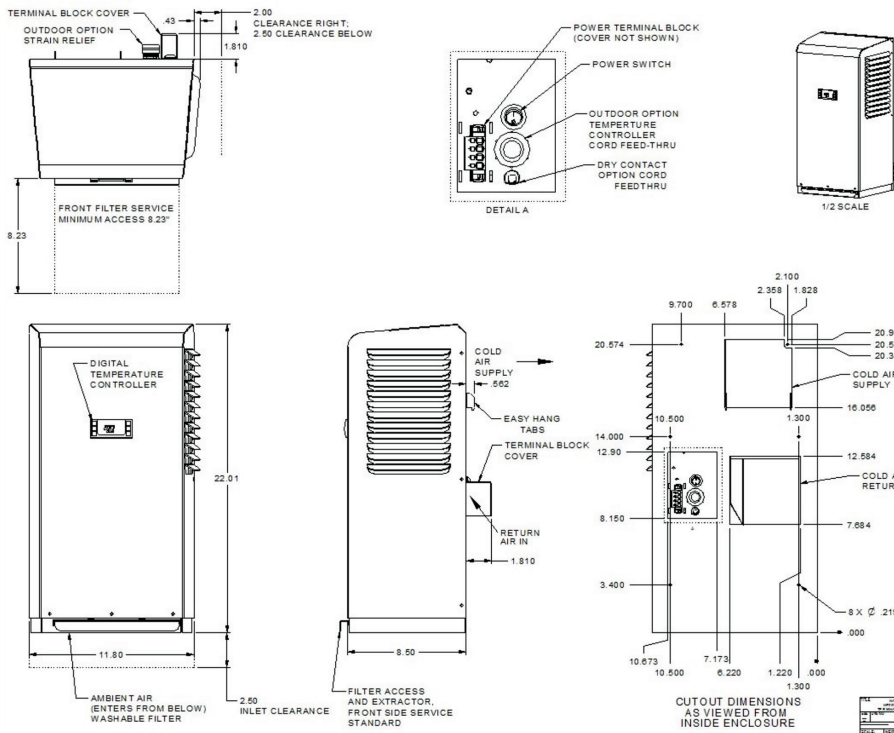
NE010 100 V 50 Hz



NE010 200 V 50 Hz



Testing done under controlled conditions. Actual performance may vary.



ATTENTION: If ordering a replacement for a Thermal Edge air conditioner, please include the part number and serial number of the unit being replaced in your order. This will ensure that we ship a replacement that is compatible with the cutout dimensions and power connection features of the older model. All information subject to change without notice.