

7,773 BTUH (@ 95°F ENCLOSURE & 50°F WATER TEMPERATURES)

INDOOR/OUTDOOR, UL TYPES 12, 4 & 4X AVAILABLE

When ambient conditions are extreme, Air-to-Water Heat Exchangers by Thermal Edge provide reliable, efficient, and cost-effective solutions. Ideal for high ambient conditions and tough industrial environments, these air-to-water heat exchangers provide contaminant-free cooling while minimizing energy use and maintenance cost.



Key Design Features

- Protection from outdoor contaminants with a closed loop design
- Constant elimination of condensate
- Easy maintenance with a filter free design
- Flexible application with the narrow body style fitting 12" deep enclosures
- Eliminates water and corrosion buildup in washdown applications with a sloped roof design and seam welded shroud
- Ruggedly designed for manufacturing environments in powder coated steel or corrosion resistant stainless steel
- Maintains UL Tested NEMA Type 12, 4, and 4X
- Ambient operating temperature: 34°F - 185°F
- Overall dimensions: 29" H x 11.8" W x 6" D

OPTIONS:

- Integrated digital temperature controller
- Solenoid water valve
- Water Leak Detection Switch
- Corrosive environment package
- Open door kill switch
- Aluminum or 316 stainless steel housing
- Enclosure mounted controller
- Dry contact alarm
- Remote monitoring options
- UL power cord

APPLICATIONS

Ideal for food processing plants, agricultural irrigation, waste-water treatment, automotive plants, flour milling and mining operations where water is readily available onsite.

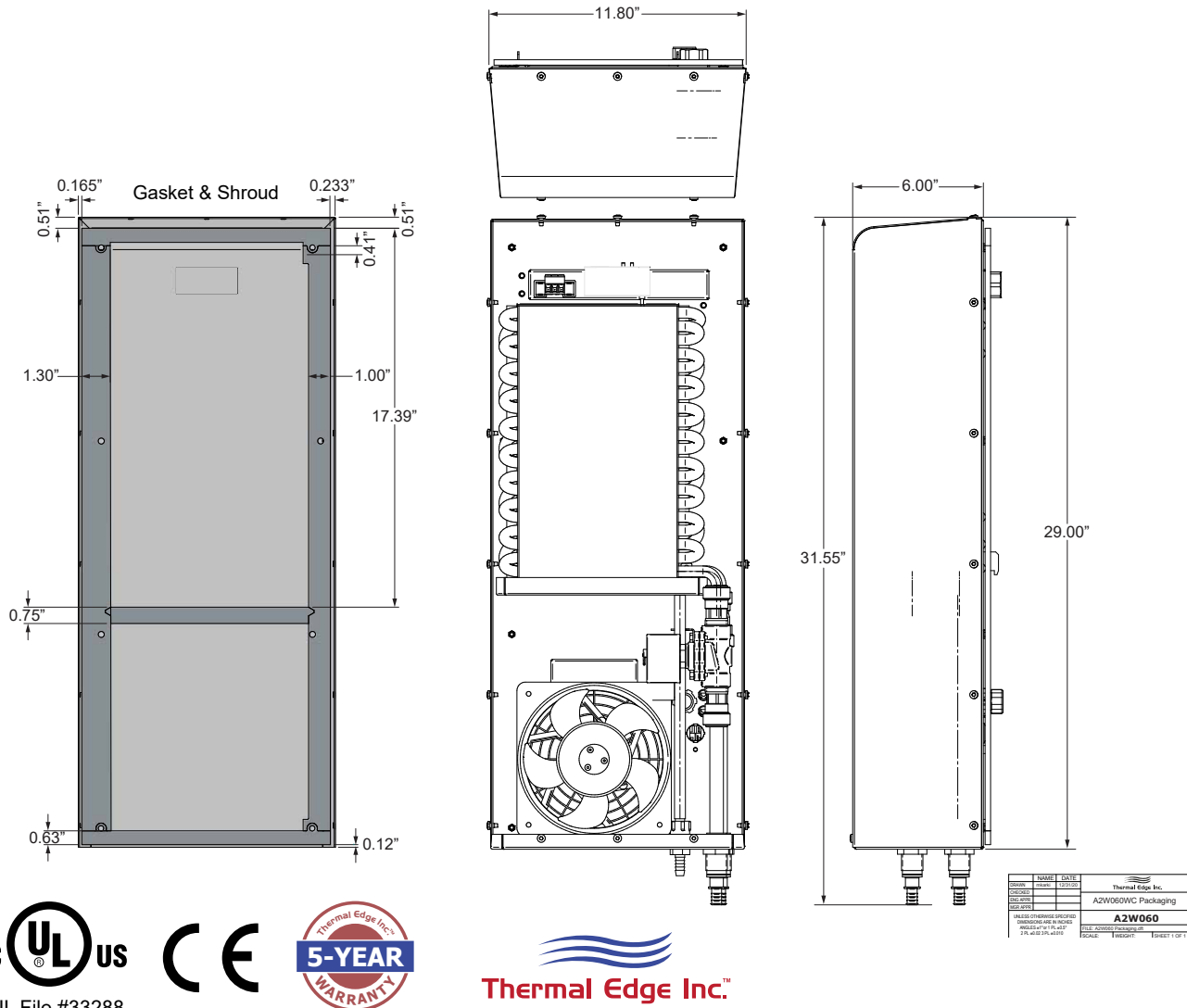
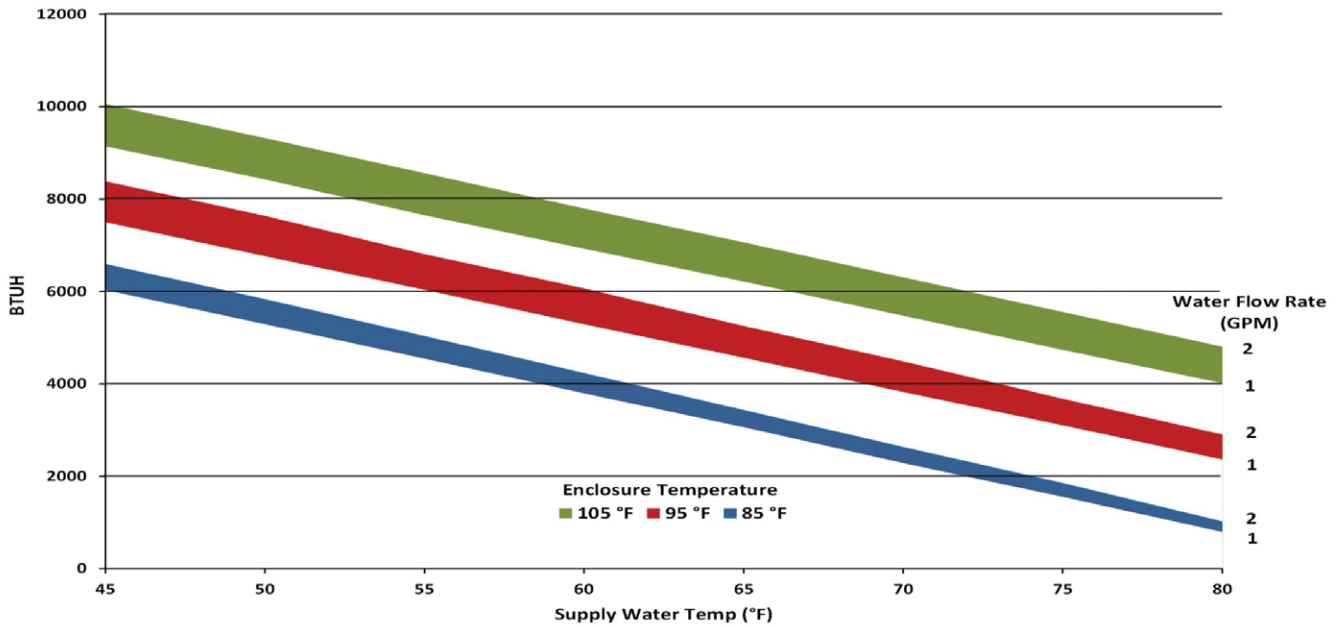
ACCESSORIES:

Water supply shutoff valves



Model	UL Type	Material	Voltage/Phase/Hz.	Running Amps	Air Flow Rate (CFM @ 0 Static Pressure)	H x W x D	Weight (lbs.)
A2W601212	12	Powder coated steel	115/1/50-60	0.59	234	29" x 11.8" x 6"	33.75
A2W601204	4	Powder coated steel	115/1/50-60	0.59	234	29" x 11.8" x 6"	33.75
A2W60124X	4X	Stainless steel	115/1/50-60	0.59	234	29" x 11.8" x 6"	33.75
A2W602312	4X	Powder coated steel	230/1/50-60	0.38	234	29" x 11.8" x 6"	33.75
A2W602304	12	Powder coated steel	230/1/50-60	0.38	234	29" x 11.8" x 6"	33.75
A2W60234X	4	Stainless steel	230/1/50-60	0.38	234	29" x 11.8" x 6"	33.75
A2W604812	4X	Powder coated steel	460/1/50-60	0.19	234	29" x 11.8" x 6"	33.75
A2W604804	12	Powder coated steel	460/1/50-60	0.19	234	29" x 11.8" x 6"	33.75
A2W60484X	4	Stainless steel	460/1/50-60	0.19	234	29" x 11.8" x 6"	33.75

Testing done under controlled conditions. Actual performance may vary.



cULUS
UL File #33288

CE



Thermal Edge Inc.[™]

5-YEAR

WARRANTY



Thermal Edge Inc.™

	NAME	DATE	 Thermal Edge Inc. A2W060WC Packaging A2W060
DRAWN	ISSUED	1/21/2010	
CHECKED			
ENG APP'D			
MGR APP'D			
UNLESS OTHERWISE SPECIFIED DIMENSIONS ARE IN INCHES ANGLES = 90° ± 1° PL = 0.015 2 PL = 0.02 3 PL = 0.010			FILE: A2W060WC Packaging.dwg PLOT: PLOT01.DWG PLOT: PLOT01.DWG

**All information subject to change without notice.*