

HAZARDOUS LOCATIONS

15,000 BTUH | INDOOR/OUTDOOR, UL TYPES 12, 4 & 4X AVAILABLE

Designed to provide nonincendive cooling for electrical enclosures in hazardous locations, these closed-loop units are ideal for use on systems in chemical and petrochemical, refining, onshore and offshore drilling applications.



Thermal Edge HC151 Hazardous Location air conditioners are certified to the following standard(s):

ANSI/ISA-12.12.01-2015 Nonincendive Electrical Equipment for use in Class I and II, Division 2 and Class III, Division 1 and 2 Hazardous (Classified) Locations

CAN/CSA C22.2 No. 213-15 Nonincendive Electrical Equipment for use in Class I and II, Division 2 and Class III, Division 1 and 2 Hazardous (Classified) Locations

SYSTEM FEATURES

- For purged and non-purged enclosures
- Active, energy efficient, Condensate Evaporation System
- Fully programmable digital controller with built in alarms and alerts
- Remote controller option places controller inside enclosure
- Thermal Expansion Valve for maximum efficiency when temperature or heat load changes
- Hermetically sealed compressor thermal overload protector
- 15,000 BTUH
- Available in UL types 12, 4 and 4X

UNIT EFFICIENCY

- Pressure-operated condenser fan reduces power inrush and saves energy
- Highly efficient Rotary Compressor
- Fully insulated & sealed cabinet

Critical components in the NRTL Hazardous Location Listing Report must not be substituted with alternate components.

Thermal Edge, Inc. and MET Labs must be notified before changes to any drawings, samples, or required documentation are approved.

Options:

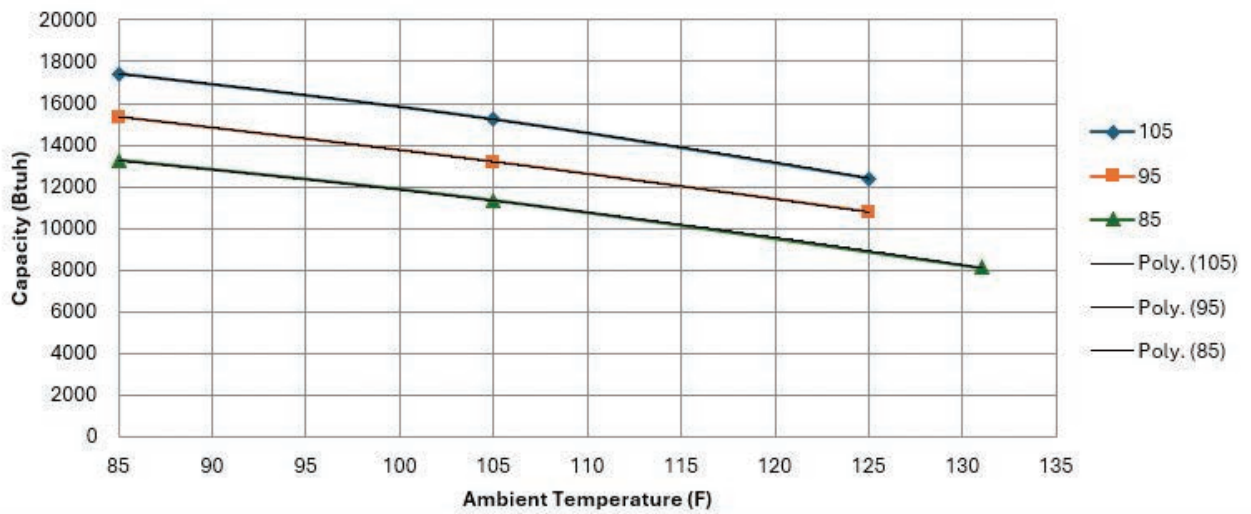
- Corrosive Environment Packages
- Extreme Ambient Packages
- Remote Controller
- Dry Contact Alarm Capabilities
- Special Controller Programming
- External Heater Control (for Haz Loc enclosure heaters)
- All Filter Options
- Extended Temperature Probe
- Vibration Package
- Custom Paint



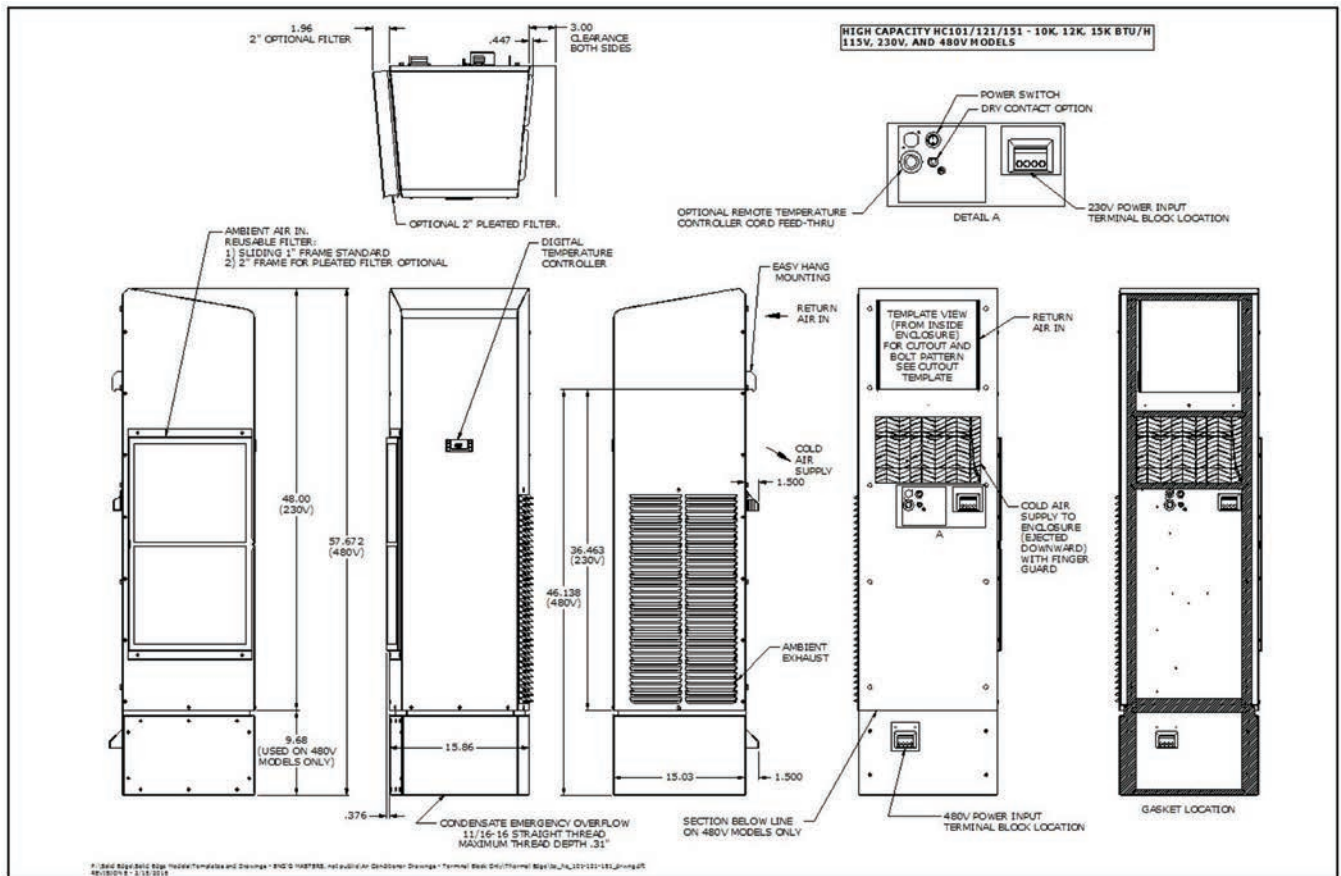
**NO WATER
DRIPS FROM
THERMAL EDGE
ENCLOSURE AIR
CONDITIONERS**

Model	UL Type	BTU/ Hour	Material	Voltage/ Phase/Hz.	Running Amps	Max. Amb. Temp.	H x W x D	Weight (lbs.) Unit/Ship
HC15123612J4	12	15,000	Powder coated steel	230/1/60	11.3	122°F	48" x 15.86" x 15.03"	170 / 190
HC15123604J4	4	15,000	Powder coated steel	230/1/60	11.3	122°F	48" x 15.86" x 15.03"	170 / 190
HC1512364XJ4	4X	15,000	Stainless steel	230/1/60	11.3	122°F	48" x 15.86" x 15.03"	170 / 190
HC15148612J4	12	15,000	Powder coated steel	460/1/60	5.7	122°F	57.6" x 15.86" x 15.03"	247 / 290
HC15148604J4	4	15,000	Powder coated steel	460/1/60	5.7	122°F	57.6" x 15.86" x 15.03"	247 / 290
HC1514864XJ4	4X	15,000	Stainless steel	460/1/60	5.7	122°F	57.6" x 15.86" x 15.03"	247 / 290

Unit Model No. HC151236



Testing done under controlled conditions. Actual performance may vary.



ATTENTION: If ordering a replacement for a Thermal Edge air conditioner, please include the part number and serial number of the unit being replaced in your order. This will ensure that we ship a replacement that is compatible with the cutout dimensions and power connection features of the older model.

Shroud mounted controllers max ambient 122F, remote controllers max ambient is 131F.

All information subject to change without notice.

