

**17,330 BTUH (@ 95°F ENCLOSURE & 50°F WATER TEMPERATURES)**

**INDOOR/OUTDOOR, UL TYPES 12, 4 & 4X AVAILABLE**

When ambient conditions are extreme, Air-to-Water Heat Exchangers by Thermal Edge provide reliable, efficient, and cost-effective solutions. Ideal for high ambient conditions and tough industrial environments, these air-to-water heat exchangers provide contaminant-free cooling while minimizing energy use and maintenance cost.



## Key Design Features

- Protection from outdoor contaminants with a closed loop design
- Constant elimination of condensate
- Easy maintenance with a filter free design
- Flexible application with the narrow body style fitting 16" deep enclosures
- Eliminates water and corrosion buildup in washdown applications with a sloped roof design and seam welded shroud
- Ruggedly designed for manufacturing environments in powder coated steel or corrosion resistant stainless steel
- Maintains UL Tested NEMA Type 12, 4, and 4X
- Ambient operating temperature: 34°F - 140°F
- Overall dimensions: 40.7" H x 15.8" W x 8.1" D

## OPTIONS:

- Integrated digital temperature controller
- Solenoid water valve
- Water Leak Detection Switch
- Corrosive environment package
- Open door kill switch
- Aluminum or 316 stainless steel housing
- Enclosure mounted controller
- Dry contact alarm
- Remote monitoring options
- UL power cord

## APPLICATIONS

Ideal for food processing plants, agricultural irrigation, waste-water treatment, automotive plants, flour milling and mining operations where water is readily available onsite.

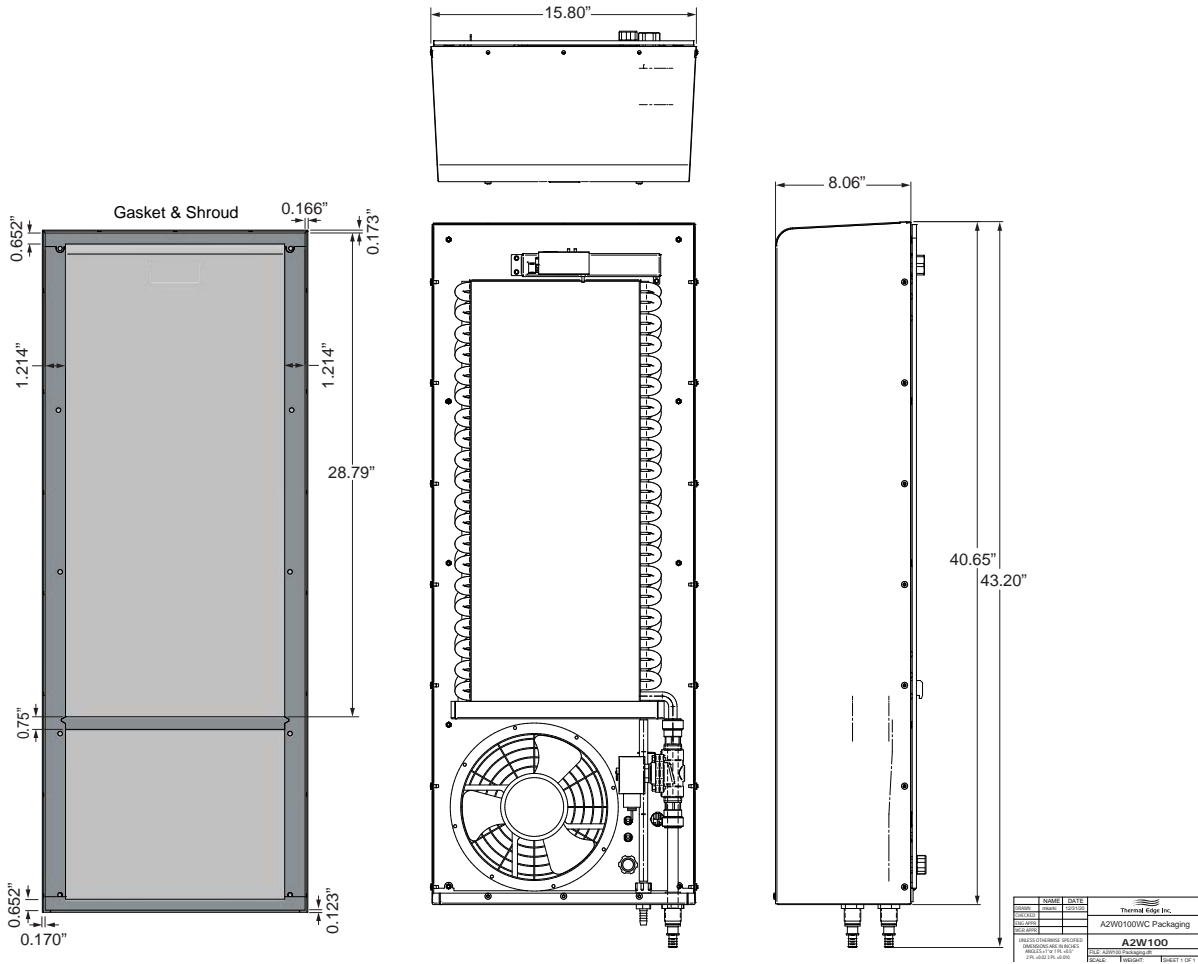
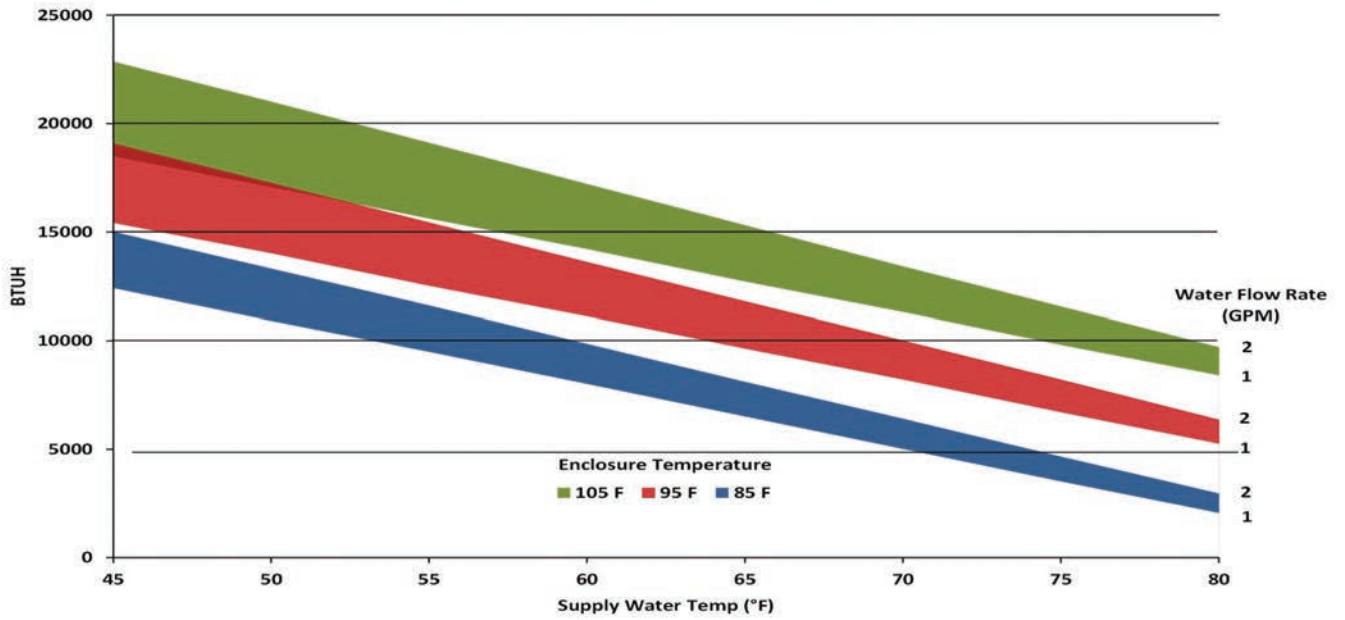
## ACCESSORIES:

Water supply shutoff valves



Model	UL Type	Material	Voltage/Phase/Hz.	Running Amps	Air Flow Rate (CFM @ 0 Static Pressure)	H x W x D	Weight (lbs.)
A2W1001212	12	Powder coated steel	115/1/50-60	1.11	516	40.7" x 15.8" x 8.1"	55
A2W1001204	4	Powder coated steel	115/1/50-60	1.11	516	40.7" x 15.8" x 8.1"	55
A2W100124X	4X	Stainless steel	115/1/50-60	1.11	516	40.7" x 15.8" x 8.1"	55
A2W1002312	12	Powder coated steel	230/1/50-60	0.60	516	40.7" x 15.8" x 8.1"	55
A2W1002304	4	Powder coated steel	230/1/50-60	0.60	516	40.7" x 15.8" x 8.1"	55
A2W100234X	4X	Stainless steel	230/1/50-60	0.60	516	40.7" x 15.8" x 8.1"	55
A2W1002312	12	Powder coated steel	460/1/50-60	0.30	516	40.7" x 15.8" x 8.1"	55
A2W1002304	4	Powder coated steel	460/1/50-60	0.30	516	40.7" x 15.8" x 8.1"	55
A2W100234X	4X	Stainless steel	460/1/50-60	0.30	516	40.7" x 15.8" x 8.1"	55

Testing done under controlled conditions. Actual performance may vary.



\*All information subject to change without notice.