



Thermal Edge Inc.

TEMPERATURE CONTROL SOLUTIONS FOR ELECTRICAL ENCLOSURES



Plastic Filtered Fan Packages

Includes filtered fan & filtered exhaust vent. UL types 1, 12 and 3R

Thermal Edge Filtered Fan Packages are designed to be your economical answer to cooling electrical enclosures in environments that are not extremely harsh, where humidity is not a concern and temperatures slightly above ambient are acceptable. UL Type 3R models are intended to keep the elements out of your enclosure while maintaining free air movement from your filtered fan packages.



Secure Snap-in Installation

Installation of the UL type 12 and 3R filter fans does not require the use of tools. Clip mounting system, for 18 to 11 gauge panels.



Sliding Cover Access to Filter Media

Changing the filter media is very easy. The sliding motion of the cover of the UL type 12 and 3R filter fans means that no tools are required.



Optional Protection Hood

IP56 stainless steel cover can be applied to filtered fans. Also available with type 4X rating and FDA seal for high hygienic food & beverage and outdoor applications.

5 YEARS

Industry Leading 5-Year Warranty

Thermal Edge products are warranted to be free of defects in workmanship, materials and components.

Plastic FILTERED FAN PACKAGES

Injection Molded Plastic

UL Types 12 & 3R



- Package includes filtered fan & filtered exhaust vent
- Injection Molded UV resistant plastic
 - UL Type 12 color: RAL 7035 light grey
 - UL Type 3R color: RAL 9005 jet black
- Secure snap-in installation on 18 to 11 gauge panels
- Integrated perimeter seal
- Sliding grille for easy filter maintenance
- Quiet, efficient ball bearing fans
 - 100,000 hour L10 lifetime @25°C
 - Thermal motor protection
 - Screwless terminal block electrical connection (28 to 14 AWG)
- Progressive structure synthetic fiber filter medium
 - Washable
 - Class G3 per EN 779
- Hood-free Type 3R rating
- Storage temperature: -40 to 158 °F
- Operating temperature: 14 to 131 °F
- Noise Level: < 60 dBA

Part Number UL Type 12 (Color: RAL 7035 gray)	Filtered Fan CFM	CFM With Exhaust Filter	Voltage/ Frequency	Rated Current (Amps)	Weight (lbs.)
PFFP085-120-12-XXX	39/46	26/31	115 VAC 50/60	0.26/0.22	1.9
PFFP085-230-12-XXX	39/46	26/31	230 VAC 50/60	0.13/0.10	1.9
PFFP085-D24-12-XXX	28	21	24 VDC	0.31	1.2
PFFP150-120-12-XXX	65/76	50/60	115 VAC 50/60	0.20/0.18	2.5
PFFP150-230-12-XXX	65/76	50/60	230 VAC 50/60	0.126/0.11	2.5
PFFP150-D24-12-XXX	59	44	24 VDC	0.342	1.8
PFFP250-120-12-XXX	135/159	95/112	115 VAC 50/60	0.28/0.27	3.9
PFFP250-230-12-XXX	135/159	95/112	230 VAC 50/60	0.14/0.16	3.9
PFFP250-D24-12-XXX	162	118	24 VDC	1.3	3.8
PFFP450-120-12-XXX	262/285	186/206	115 VAC 50/60	0.68/0.73	8.0
PFFP450-230-12-XXX	268/296	189/210	230 VAC 50/60	0.31/0.35	8.0

Part Number UL Type 3R (Color: RAL 9005 black)	Filtered Fan CFM	CFM With Exhaust Filter	Voltage/ Frequency	Rated Current (Amps)	Weight (lbs.)
PFFP085-120-3R-XXB	29/35	18.5/22	115 VAC 50/60	0.26/0.22	2.1
PFFP085-230-3R-XXB	29/35	18.5/22	230 VAC 50/60	0.13/0.10	2.1
PFFP085-D24-3R-XXB	21	14.5	24 VDC	0.31	1.2
PFFP150-120-3R-XXB	53/65	37/45	115 VAC 50/60	0.20/0.18	2.5
PFFP150-230-3R-XXB	53/65	37/45	230 VAC 50/60	0.126/0.11	2.5
PFFP150-D24-3R-XXB	50	31	24 VDC	0.342	1.8
PFFP250-120-3R-XXB	94/115	68/82	115 VAC 50/60	0.28/0.26	3.9
PFFP250-230-3R-XXB	94/115	68/82	230 VAC 50/60	0.14/0.16	3.9
PFFP250-D24-3R-XXB	135	93	24 VDC	1.3	3.8
PFFP450-120-3R-XXB	199/222	141/182	115 VAC 50/60	0.68/0.73	7.9
PFFP450-230-3R-XXB	212/235	150/168	230 VAC 50/60	0.31/0.35	7.9

Accessories:

- Additional filtered exhaust vent
- Replacement filter media
- Plastic adaptor (reduce fan intrusion into electrical enclosure)
- Stainless steel hood (IP56 pressurized wash down protection)
- Thermostats



Model	Height	Width	Depth
PFFP085	5.91"	5.91"	2.915"
PFFP150	8.03"	8.03"	3.755"
PFFP250	9.84"	9.84"	4.924"
PFFP450	12.8"	12.8"	6.314"

Due to design and part development, all information is subject to change without notice

1800 Hurd Drive, Irving, Texas 75038





Thermal Edge Inc.™

Plastic FILTERED FAN PACKAGES

Injection Molded Plastic

UL Type 1

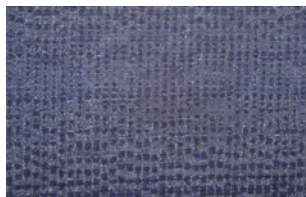
- Efficient, quiet ball bearing fans
- Nylon or electrostatic polypropylene filter pad
- Snap-on grille for easy filter maintenance
- Angled louvers to resist moisture
- Package includes fan & exhaust vent
- All kits include integrated gaskets and mounting template
- Pressurized operation standard, reverse flow optional
- Operating temperature: 14 to 131°F



Part Number UL Type 1	CFM Free Flow	CFM With 1 Filter	CFM With 2 Filters	Voltage/Hz.	Rated Amps	RPM	H x W x D (Grille Depth .52")
PFFP080-120	75	53	24	115 VAC 50/60	0.11	2900	5.86" x 5.86" x 2.78"
PFFP080-230	75	53	24	230 VAC 50/60	0.06	2900	5.86" x 5.86" x 2.78"
PFFP080-D24	89	63	28	24 VDC	0.19	2200	5.86" x 5.86" x 2.78"
PFFP100-120	131	101	45	115 VAC 50/60	0.17/0.18	3300	8.03" x 8.03" x 3.67"
PFFP100-230	131	101	45	230 VAC 50/60	0.1/0.11	3300	8.03" x 8.03" x 3.67"
PFFP100-D24	90	69	31	24 VDC	0.23	3300	8.03" x 8.03" x 3.67"
PFFP200-120	300	202	91	115 VAC 50/60	0.35/0.40	3300	10.06" x 10.00" x 4.39"
PFFP200-230	300	202	91	230 VAC 50/60	0.20/0.22	3300	10.06" x 10.00" x 4.39"
PFFP200-D24	300	202	91	24 VDC	2.1	3900	10.06" x 10.00" x 4.39"
PFFP390-120	390	280	124	115 VAC 50/60	0.51/0.54	3300	7.12" x 16.56" x 2.78"
PFFP390-230	390	280	124	230 VAC 50/60	0.30/0.33	3300	7.12" x 16.56" x 2.78"
PFFP390-D24	270	192	85	24 VDC	0.69	3300	7.12" x 16.56" x 2.78"
PFFP500-120	850	572	247	115 VAC 50/60	0.50/0.58	2700	12.60" x 12.60" x 4.85"
PFFP500-230	850	572	247	230 VAC 50/60	0.25/0.30	2700	12.60" x 12.60" x 4.85"

Accessories:

- Thermostats
- Washable replacement filters
- Vent kits



(972) 580-0200

www.thermaledge.com • thermalinfo@thermal-edge.com



Thermal Edge Inc.™

Plastic FILTERED FAN PACKAGES

UL Type 12 and 3R Accessories

FILTER MEDIA



- High performance progressive structure polyolefin fiber with thermal bonding
- High arrestance throughout useful lifetime, providing maximum operational reliability
- Class G3 per EN779
- Can be cleaned, up to 10 times, by careful washing, blowing dry and lightly beating
- 6 filters per package

STAINLESS STEEL COVER



- For high pressure wash down applications
- IP56 protection
- 304 stainless steel
- Easy mounting with stainless steel bayonet bracket and PVC gasket

DEPTH ADAPTER



- For reducing fan intrusion into cabinet by 1 inch
- RAL7035 plastic frame
- Adapter mounts on outside of cabinet

Enclosure Air Conditioners



1,000 - 20,000 BTUH

Air to Water Heat Exchangers



3,690 - 18,930 BTUH

Air to Air Heat Exchangers



12 - 40 Watts/°F

Plastic and Metal Filtered Fans



80 - 750 CFM



Due to design and part development, all information is subject to change without notice

(972) 580-0200 • www.thermaledge.com • thermalinfo@thermal-edge.com



Brochure #9
12-Apr-2023