

## 3000 BTUH | INDOOR/OUTDOOR, UL TYPES 12, 4 & 4X AVAILABLE

Engineered & manufactured to endure the most difficult of environments and applications. Thermal Edge air conditioners will exceed environmental requirements in applications like Steel, Food Processing, Petro-Chemical, Cement, Paper & Pulp and Plastics.



### OPTIONS:

- Low/High Ambient
- Remote Controller
- Corrosion Protection
- Dry Contact
- Redundant System
- Filter/Filter Frame
- Controller Programming
- Heater
- Hazardous Location
- Open Door Kill Switch
- Custom Finish
- Extended Temperature Probe
- Remote Control/Monitor
- Vibration Resistant

### Digital Temperature Controller

- Programmable set point and temperature controls
- Visible Error and/or alarm messaging
- System status indication & keypad lockout function

### Active Condensate Evaporation System

- Constant elimination of condensate
- Increases unit efficiency by pre-cooling refrigerant

### Key Design Features

- Sloped top to allow for water runoff
- Designed with rigid chassis and seam welded shroud
- Thoughtful interior design for easy maintenance
- Narrow body style fits on 12" enclosure

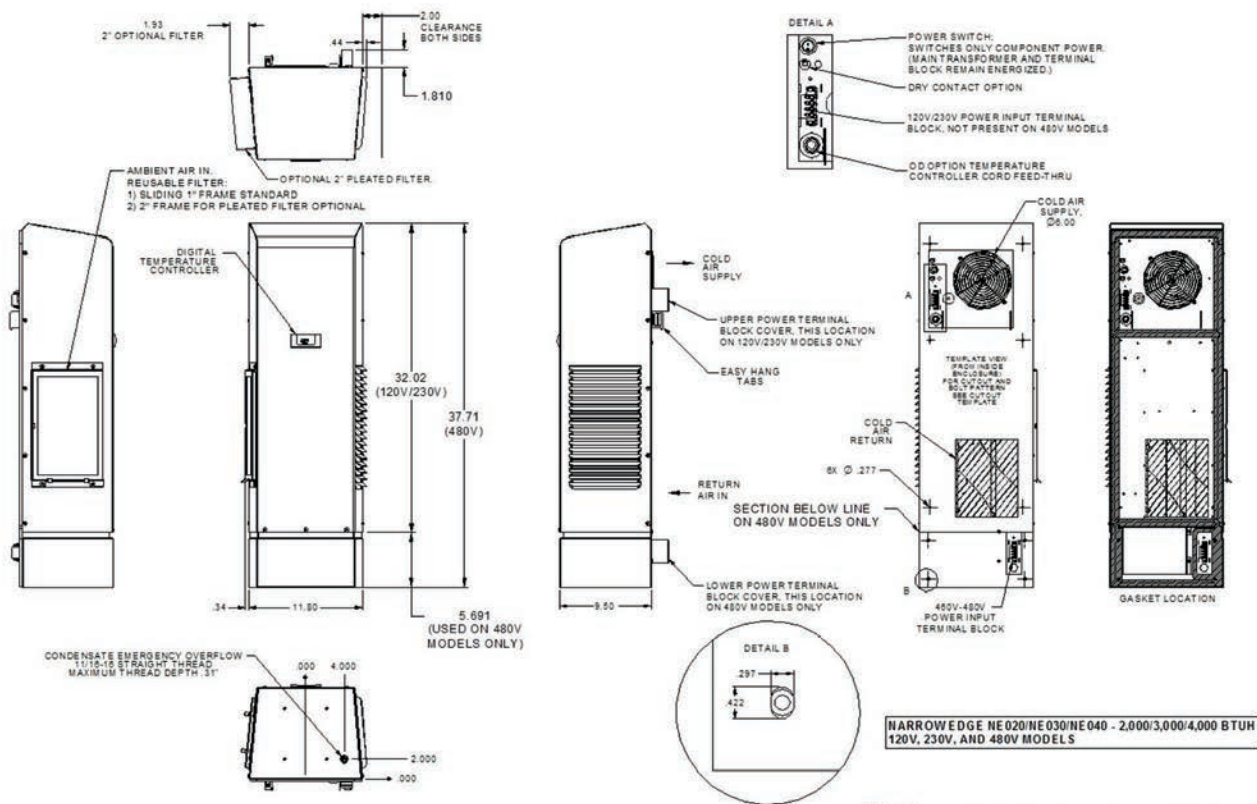
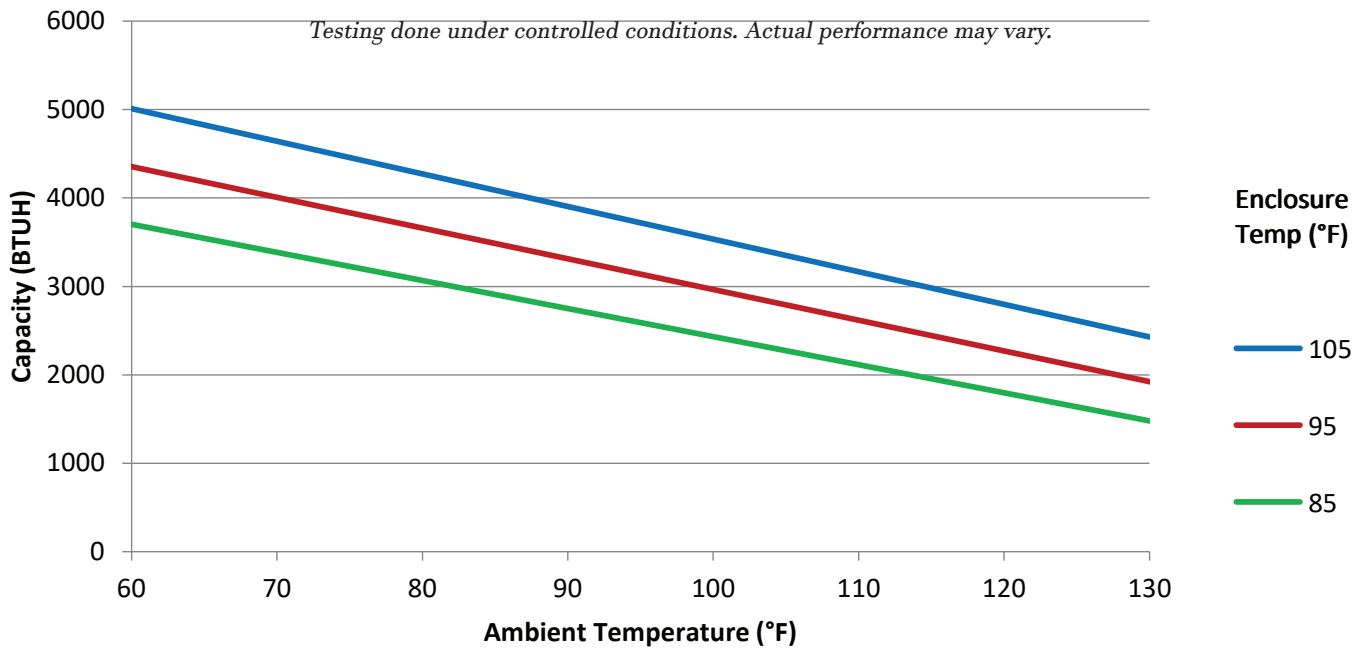
### Unit Efficiency

- Temperature operated condenser fan reduces power inrush and saves energy
- Highly efficient rotary compressor
- Fully insulated & sealed cabinet
- Thermal Expansion Valve to maintain cooling capacity over a broad ambient temperature range

### Compressor Protection System

- High & Low refrigerant cutouts with fault indication
- Compressor anti short cycle protection
- Thermal overload protector
- Compressor run capacitors reduce power inrush, save energy and increase compressor life

Model	UL Type	BTU/Hour	Material	Voltage/Phase/Hz.	Running Amps	Max. Amb. Temp.	H x W x D	Unit Weight (lbs.)
NE03012612	12	3000	Powder coated steel	115/1/60	4.86	140°F	32" x 11.8" x 9.5"	70
NE03012604	4	3000	Powder coated steel	115/1/60	4.86	140°F	32" x 11.8" x 9.5"	70
NE0301264X	4X	3000	Stainless steel	115/1/60	4.86	140°F	32" x 11.8" x 9.5"	70
NE0301264XL4	4X	3000	Mill finish aluminum	115/1/60	4.86	140°F	32" x 11.8" x 9.5"	60
NE03023612	12	3000	Powder coated steel	230/1/60	3.07	125°F	32" x 11.8" x 9.5"	72
NE03023604	4	3000	Powder coated steel	230/1/60	3.07	125°F	32" x 11.8" x 9.5"	72
NE0302364X	4X	3000	Stainless steel	230/1/60	3.07	125°F	32" x 11.8" x 9.5"	72
NE0302364XL4	4X	3000	Mill finish aluminum	230/1/60	3.07	125°F	32" x 11.8" x 9.5"	62
NE03048612	12	3000	Powder coated steel	460/1/60	1.28	140°F	38" x 11.8" x 9.5"	103
NE03048604	4	3000	Powder coated steel	460/1/60	1.28	140°F	38" x 11.8" x 9.5"	103
NE0304864X	4X	3000	Stainless steel	460/1/60	1.28	140°F	38" x 11.8" x 9.5"	103
NE0304864XL5	4X	3000	Mill finish aluminum	460/1/60	1.28	140°F	38" x 11.8" x 9.5"	93



**ATTENTION:** If ordering a replacement for a Thermal Edge air conditioner, please include the part number and serial number of the unit being replaced in your order. This will ensure that we ship a replacement that is compatible with the cutout dimensions and power connection features of the older model. All information subject to change without notice.