

**12,000 BTUH | INDOOR/OUTDOOR, UL TYPES 12, 4 & 4X AVAILABLE**

Engineered & manufactured to endure the most difficult of environments and applications. Thermal Edge air conditioners will exceed environmental requirements in applications like Steel, Food Processing, Petro-Chemical, Cement, Paper & Pulp and Plastics.



## OPTIONS:

- Low/High Ambient
- Remote Controller
- Corrosion Protection
- Dry Contact
- Redundant System
- Filter/Filter Frame
- Controller Programming
- Heater
- Hazardous Location
- Open Door Kill Switch
- Custom Finish
- Extended Temperature Probe
- Remote Control/Monitor
- Hard Start Kit
- Diagnostics

## Digital Temperature Controller

- Programmable set point and temperature controls
- Visible Error and/or alarm messaging
- System status indication & keypad lockout function

## Active Condensate Evaporation System

- Constant elimination of condensate
- Increases unit efficiency by pre-cooling refrigerant

## Key Design Features

- Sloped top to allow for water runoff
- Designed with rigid chassis and seam welded shroud
- Thoughtful interior design for easy maintenance

## Unit Efficiency

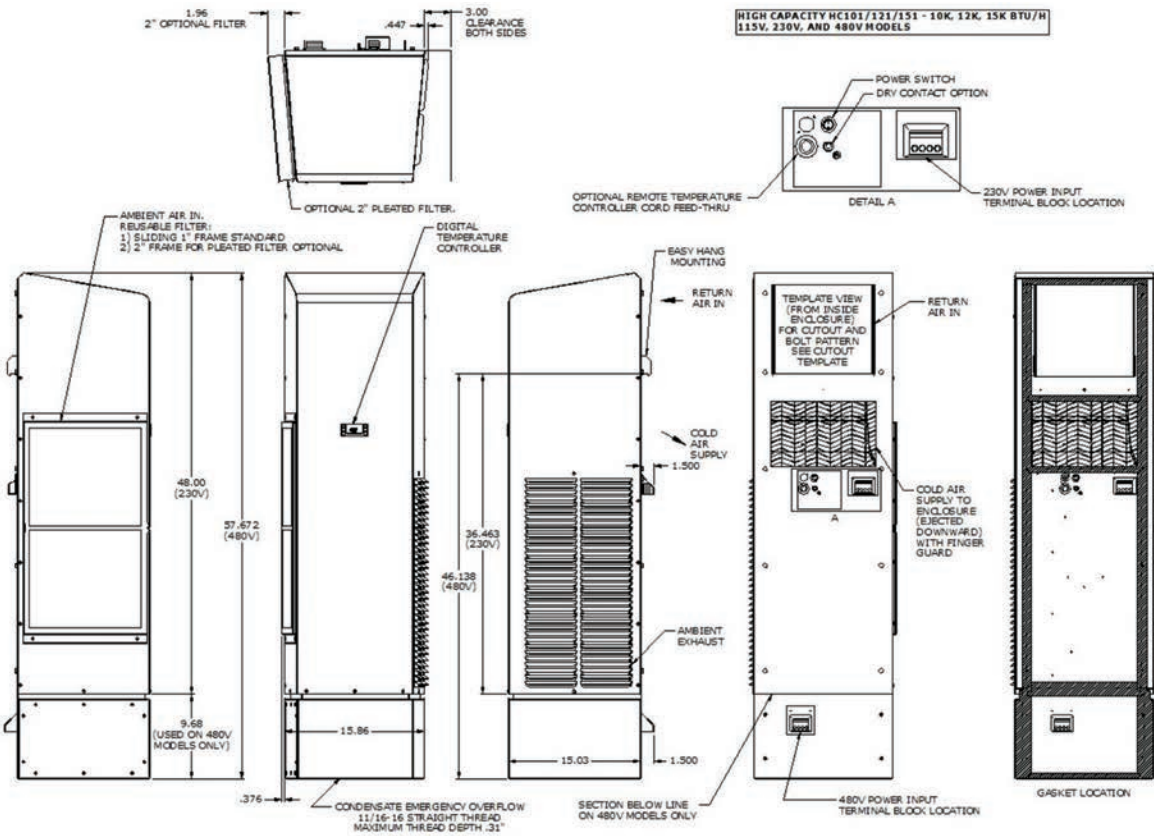
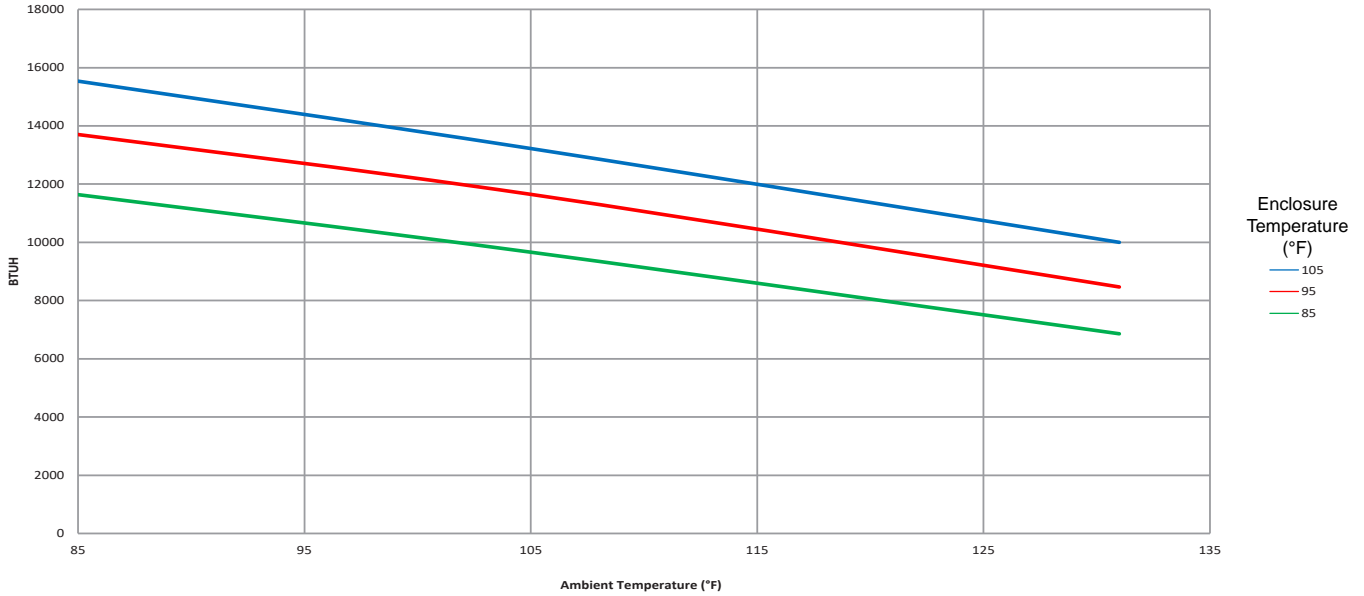
- Temperature operated condenser fan reduces power inrush and saves energy
- Highly efficient rotary compressor
- Fully insulated & sealed cabinet
- Thermal Expansion Valve to maintain cooling capacity over a broad ambient temperature range

## Compressor Protection System

- High & Low refrigerant cutouts with fault indication
- Compressor anti short cycle protection
- Thermal overload protector
- Compressor run capacitors reduce power inrush, save energy and increase compressor life

Model	UL Type	BTU/Hour	Material	Voltage/Phase/Hz.	Running Amps	Max. Amb. Temp.	H x W x D	Unit Weight (lbs.)
HC12112612	12	12,000	Powder coated steel	115/1/60	19.4	131°F	48" x 15.86" x 15.03"	167
HC12112604	4	12,000	Powder coated steel	115/1/60	19.4	131°F	48" x 15.86" x 15.03"	167
HC1211264X	4X	12,000	Stainless steel	115/1/60	19.4	131°F	48" x 15.86" x 15.03"	167
HC1211264XL4	4X	12,000	Mill finish aluminum	115/1/60	19.4	131°F	48" x 15.86" x 15.03"	157
HC12123612	12	12,000	Powder coated steel	230/1/60	8.2	131°F	48" x 15.86" x 15.03"	163
HC12123604	4	12,000	Powder coated steel	230/1/60	8.2	131°F	48" x 15.86" x 15.03"	163
HC1212364X	4X	12,000	Stainless steel	230/1/60	8.2	131°F	48" x 15.86" x 15.03"	163
HC1212364XL4	4X	12,000	Mill finish aluminum	230/1/60	8.2	131°F	48" x 15.86" x 15.03"	153
HC12148612	12	12,000	Powder coated steel	460/1/60	4.1	131°F	57.6" x 15.86" x 15.03"	237
HC12148604	4	12,000	Powder coated steel	460/1/60	4.1	131°F	57.6" x 15.86" x 15.03"	237
HC1214864X	4X	12,000	Stainless steel	460/1/60	4.1	131°F	57.6" x 15.86" x 15.03"	237
HC1214864XL5	4X	12,000	Mill finish aluminum	460/1/60	4.1	131°F	57.6" x 15.86" x 15.03"	227

Testing done under controlled conditions. Actual performance may vary.



**ATTENTION:** If ordering a replacement for a Thermal Edge air conditioner, please include the part number and serial number of the unit being replaced in your order. This will ensure that we ship a replacement that is compatible with the cutout dimensions and power connection features of the older model. All information subject to change without notice.