

1000 BTUH | INDOOR/OUTDOOR, UL TYPES 12, 4 & 4X AVAILABLE

Engineered & manufactured to endure the most difficult of environments and applications. Thermal Edge air conditioners will exceed environmental requirements in applications like Steel, Food Processing, Petro-Chemical, Cement, Paper & Pulp and Plastics. The CS011 uses a unique 3 coil design providing high capacity cooling while utilizing air intake from either side. Dual intake allows for mounting on a wall mounted enclosure on the right or left side of your enclosure.



Digital Temperature Controller

- Programmable set point and temperature controls
- Visible Error and/or alarm messaging
- System status indication & keypad lockout function

Active Condensate Evaporation System

- Constant elimination of condensate
- Increases unit efficiency by pre-cooling refrigerant

Key Design Features

- Designed with rigid chassis and seam welded shroud
- Thoughtful interior design for easy maintenance
- Narrow body style fits on 8" enclosure
- Filter free design

Unit Efficiency

- Temperature operated condenser fan reduces power inrush and saves energy
- Highly efficient rotary compressor
- Fully insulated & sealed cabinet
- Thermal Expansion Valve to maintain cooling capacity over a broad ambient temperature range

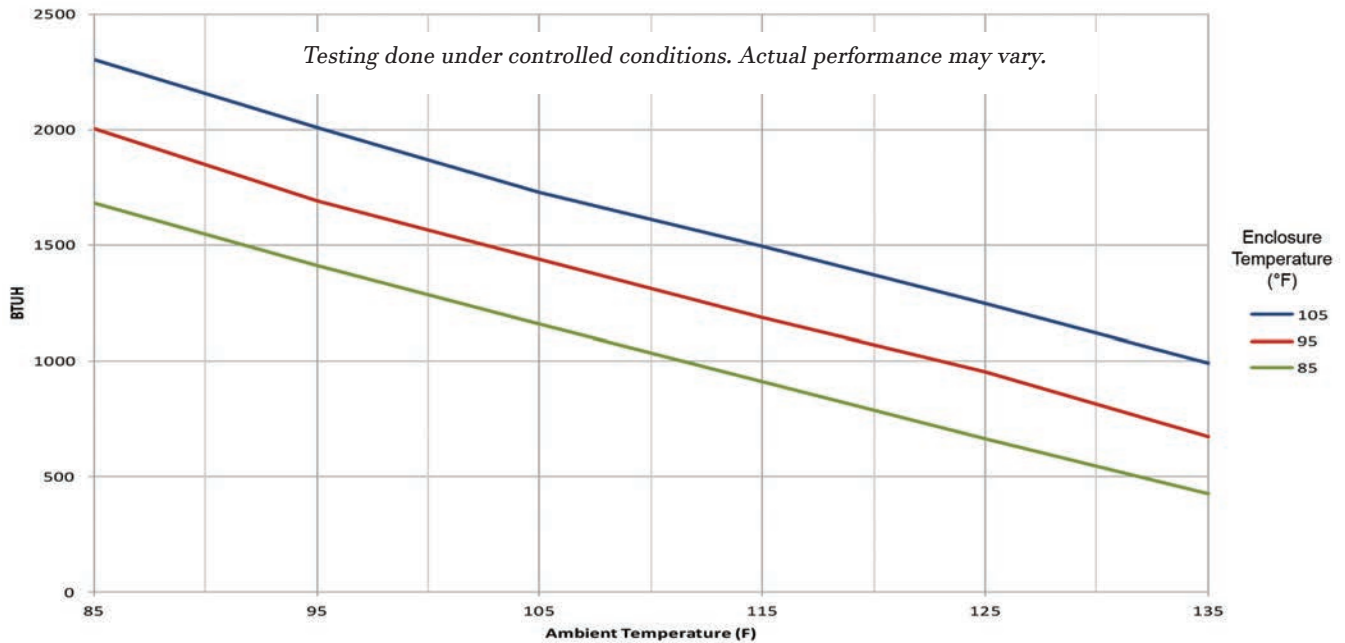
Compressor Protection System

- High & Low refrigerant cutouts with fault indication
- Compressor anti short cycle protection
- Thermal overload protector
- Compressor motor drive controller eliminates power inrush, saves energy and increases compressor life

OPTIONS:

- Low/High Ambient
- Remote Controller
- Corrosion Protection
- Dry Contact
- Controller Programming
- Heater
- Open Door Kill Switch
- Custom Finish
- Extended Temperature Probe
- Remote Control/Monitor

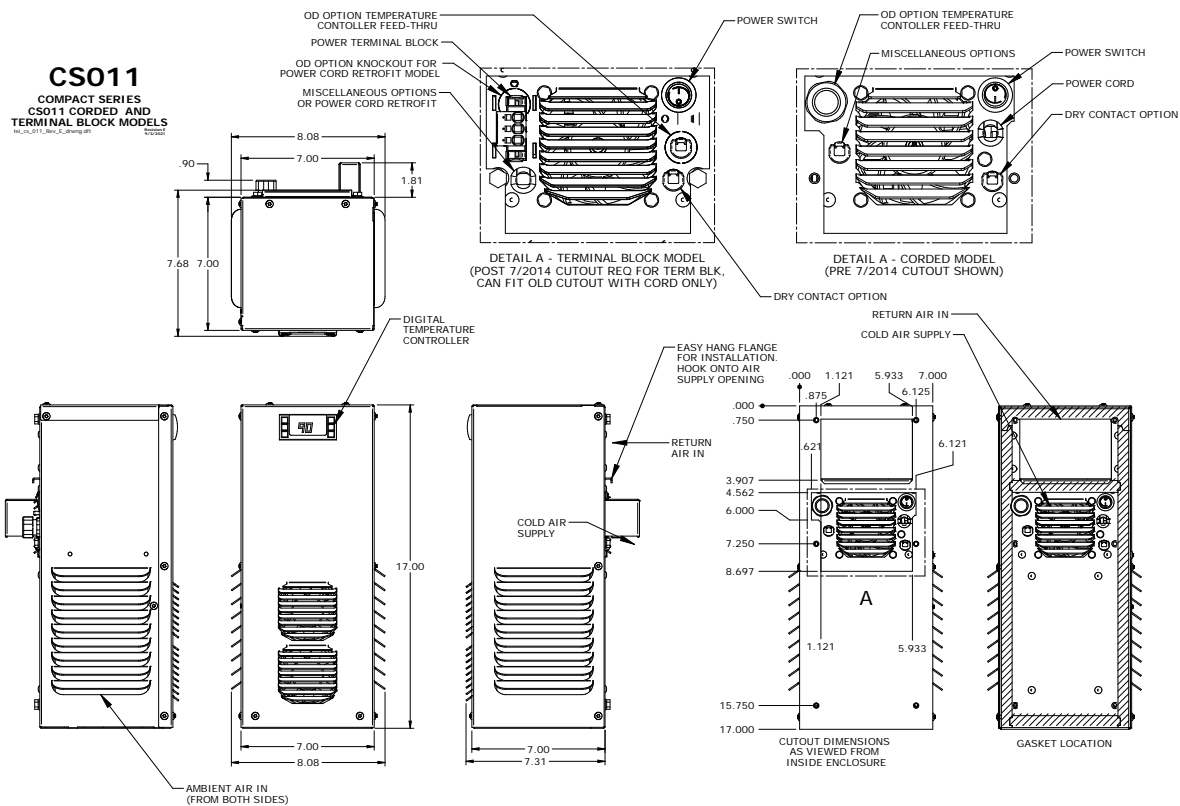
Model	UL Type	BTU/Hour	Material	Voltage/Phase/Hz.	Running Amps	Max. Amb. Temp.	H x W x D	Unit Weight (lbs.)
CS01112612	12	1000	Powder coated steel	115/1/60	2.7	131°F	17" x 7" x 7"	31
CS01112604	4	1000	Powder coated steel	115/1/60	2.7	131°F	17" x 7" x 7"	31
CS0111264X	4X	1000	Stainless steel	115/1/60	2.7	131°F	17" x 7" x 7"	31
CS0111264XL4	4X	1000	Mill finish aluminum	115/1/60	2.7	131°F	17" x 7" x 7"	24



UL File #SA32252



CS011
COMPACT SERIES
CS011 CORDED AND
TERMINAL BLOCK MODELS



ATTENTION: If ordering a replacement for a Thermal Edge air conditioner, please include the part number and serial number of the unit being replaced in your order. This will ensure that we ship a replacement that is compatible with the cutout dimensions and power connection features of the older model. All information subject to change without notice.