

**3,690 BTUH (@ 95°F ENCLOSURE & 50°F WATER TEMPERATURES)
INDOOR/OUTDOOR, UL TYPES 12, 4 & 4X AVAILABLE**

When ambient conditions are extreme, Air-to-Water Heat Exchangers by Thermal Edge provide reliable, efficient, and cost-effective solutions. Ideal for high ambient conditions and tough industrial environments, these air-to-water heat exchangers provide contaminant-free cooling while minimizing energy use and maintenance cost.



Key Design Features

- Protection from outdoor contaminants with a closed loop design
- Constant elimination of condensate
- Easy maintenance with a filter free design
- Flexible application with the narrow body style fitting 12" deep enclosures
- Eliminates water and corrosion buildup in washdown applications with a sloped roof design and seam welded shroud
- Ruggedly designed for manufacturing environments in powder coated steel or corrosion resistant stainless steel
- Maintains UL Tested NEMA Type 12, 4, and 4X
- Ambient operating temperature: 34°F - 140°F
- Overall dimensions: 19.7" H x 11.8" W x 5" D

OPTIONS:

- Integrated digital temperature controller
- Solenoid water valve
- Water Leak Detection Switch
- Corrosive environment package
- Open door kill switch
- Aluminum or 316 stainless steel housing
- Enclosure mounted controller
- Dry contact alarm
- Remote monitoring options
- UL power cord

APPLICATIONS

Ideal for food processing plants, agricultural irrigation, waste-water treatment, automotive plants, flour milling and mining operations where water is readily available onsite.

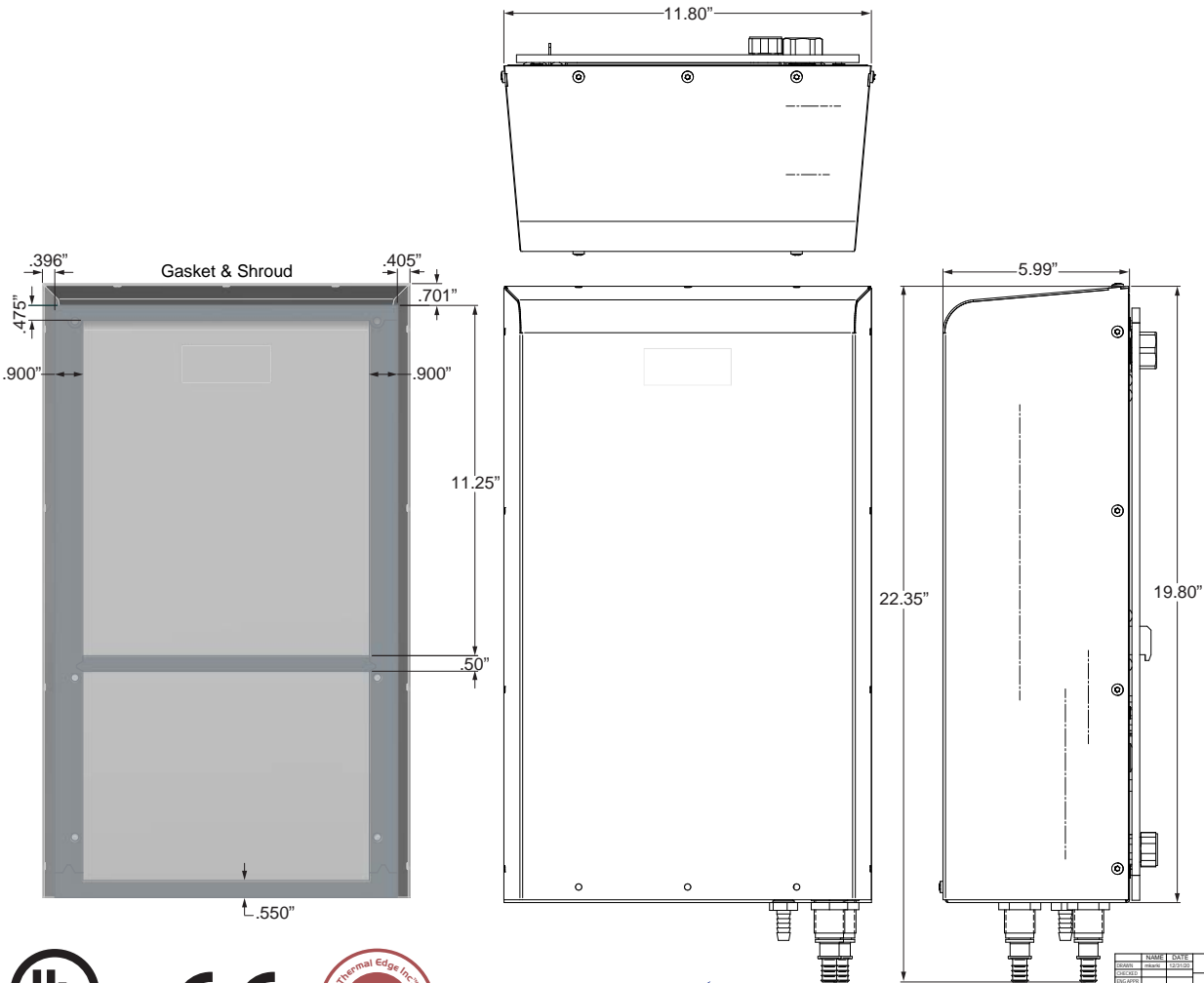
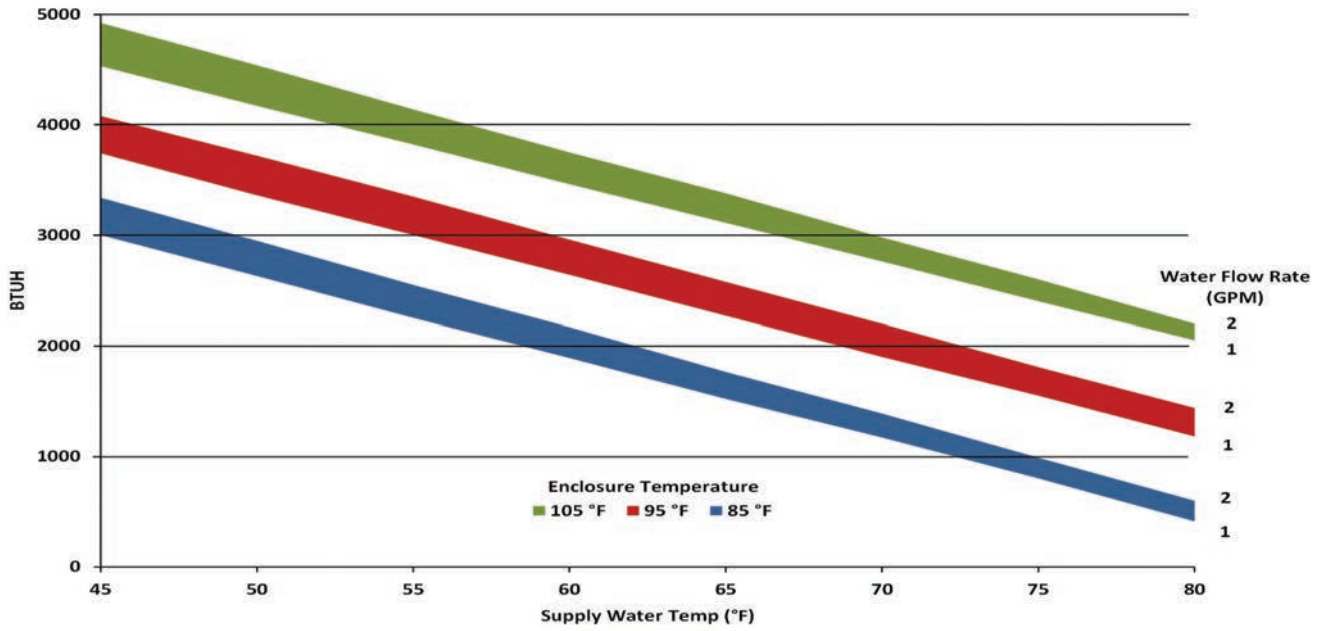
ACCESSORIES:

Water supply shutoff valves



Model	UL Type	Material	Voltage/Phase/Hz.	Running Amps	Air Flow Rate (CFM @ 0 Static Pressure)	H x W x D	Weight (lbs.)
A2W301212	12	Powder coated steel	115/1/50-60	0.37	129	19.7" x 11.8" x 5"	21.4
A2W301204	4	Powder coated steel	115/1/50-60	0.37	129	19.7" x 11.8" x 5"	21.4
A2W30124X	4X	Stainless steel	115/1/50-60	0.37	129	19.7" x 11.8" x 5"	21.4
A2W302312	12	Powder coated steel	230/1/50-60	0.23	129	19.7" x 11.8" x 5"	21.4
A2W302304	4	Powder coated steel	230/1/50-60	0.23	129	19.7" x 11.8" x 5"	21.4
A2W30234X	4X	Stainless steel	230/1/50-60	0.23	129	19.7" x 11.8" x 5"	21.4
A2W304812	12	Stainless steel	460/1/50-60	0.12	129	19.7" x 11.8" x 5"	21.4
A2W304804	4	Powder coated steel	460/1/50-60	0.12	129	19.7" x 11.8" x 5"	21.4
A2W30484X	4X	Powder coated steel	460/1/50-60	0.12	129	19.7" x 11.8" x 5"	21.4

Testing done under controlled conditions. Actual performance may vary.



NAME	DATE
DESIGN	12/31/21
REVISED	
DATE	
BY	
APP	

Thermal Edge Inc.
A2W030WC Packaging

DESCRIPTION	DATE
A2W030	
DESCRIPTION	
DATE	
BY	
APP	

A2W030
DESCRIPTION
DATE
BY
APP

*All information subject to change without notice.