



Thermal Edge Inc.TM

TEMPERATURE CONTROL SOLUTIONS FOR ELECTRICAL ENCLOSURES



MADE IN AMERICA MATTERS...

AIR CONDITIONER FILTER OPTIONS/ACCESSORIES

FILTER HOOD • LOUVERED SECURITY FLAT FILTER FRAMES
 2" FRAME & FILTER • 2" LOUVERED SECURITY FRAME & FILTER
 EXPANDED ALUMINUM REPLACEMENT FILTERS
 2" EXTENDED PLEATED REPLACEMENT FILTERS



| OPTION CODE | DESCRIPTION | CS011 | CS011D48 | CS020 | NE010-015 | NE020-030-040 | NE040D48 | NE050-060-080 | TM061-081 | HC081 | HC101-121-151 | HC201 |
|-------------|---|-------|----------|-------|-----------|---------------|----------|---------------|-----------|-------|---------------|-------|
| F1 | Painted Filter Hood for Thin Filter | | | X | | X | X | X | | X | X | X |
| F11 | SS Filter Hood for Thin Filter | | | X | | X | X | X | | X | X | X |
| F12 | Aluminum Filter Hood for Thin Filter | | | X | | X | X | X | | X | X | X |
| F3 | Painted Louvered Cover for Thin Filter | | | X | | X | X | X | Standard | X | X | X |
| F31 | SS Louvered Cover for Thin Filter | | | X | | X | X | X | | X | X | X |
| F32 | Aluminum Louvered Cover for Thin Filter | | | X | | X | X | X | | X | X | X |
| F4 | Painted Louvered Cover + 2" Filter | | | X | | X | X | X | X | X | X | X |
| F41 | SS Louvered Cover + 2" Filter | | | X | | X | X | X | X | X | X | X |
| F42 | Aluminum Louvered Cover + 2" Filter | | | X | | X | X | X | X | X | X | X |
| F5 | Flat Filter for TM | | | | | | | | X | | | |

Get the Edge... Get Thermal Edge

(972) 580-0200 • www.thermaledge.com • thermalinfo@thermaledge.com

Designed to be factory installed prior to delivery, or installed on-site

2" LOUVERED FRAME & 2" FILTER

F4: Painted, F41: Stainless Steel, F42: Aluminum

If your application is in a food processing or dirty environment, filter maintenance is crucial. These types of environments can create real problems for an air conditioner that by its very design requires a steady flow of reasonably clean air in order to remove heat from your enclosure. If condenser air flow is reduced by a dirty filter, cooling capacity will be reduced as well.

Thermal Edge offers extended surface, 2" deep filters and filter frame assemblies. These 250 micron stainless steel mesh filters, with 94% efficiency, extend the filter capacity 400%. The filters are washable and reusable. Life expectancy is determined by the environment and the cleaning procedures. Stainless steel filters are preferred in wash-down applications over aluminum filters.

These deeper filter frames can easily be retrofitted on existing units with standard filters.



2" Louvered Filter Frame

2" Pleated Filter

| Part No. | Model |
|-----------|--------------------------------------|
| 44550-12 | CS020, UL Type 12/4 |
| 44551-12 | NE020/030/040, UL Type 12/4 |
| 44552-12 | NE050/060/080 UL Type 12/4 |
| 44558-12 | TM061/081, UL Type 12/4 |
| 44554-12 | HC101/121/151/20C, UL Type 12/4 |
| 44555-12 | HC201, UL Type 12/4 |
| 44550-4X | CS020, UL Type 4X-304 SS |
| 44551-4X | NE020/030/040, UL Type 4X-304 SS |
| 44552-4X | NE050/060/080, UL Type 4X-304 SS |
| 44558-4X | TM061/081, UL Type 4X-304 SS |
| 44554-4X | HC101/121/151/20C, UL Type 4X-304 SS |
| 44555-4X | HC201, UL Type 4X-304 SS |
| 44550-4XB | CS020, UL Type 4X-316 SS |
| 44551-4XB | NE020/030/040, UL Type 4X-316 SS |
| 44552-4XB | NE050/060/080, UL Type 4X-316 SS |
| 44558-4XB | TM061/081, UL Type 4X-316 SS |
| 44554-4XB | HC101/121/151/20C, UL Type 4X-316 SS |
| 44555-4XB | HC201, UL Type 4X-316 SS |



All information subject to change without notice

Get the Edge... Get Thermal Edge
 Temperature Control Solutions for Electrical Enclosures

(972) 580-0200 • www.thermaledge.com • thermalinfo@thermaledge.com



Thermal Edge Inc.™

Designed to be factory installed prior to delivery, or installed on-site

LOUVERED SECURITY FLAT FILTER FRAMES

F3: Painted, F31: Stainless Steel, F32: Aluminum

These filter frames can easily be retrofitted on existing units with standard filters.



Filter media not included,
and sold separately.



| A/C Unit | ANSI Grey Part Number | Aluminum Part Number | 304 SS Part Number | 316 SS Part Number |
|----------|--------------------------|-------------------------|-----------------------|-----------------------|
| CS020 | 22218-1 | 22218-3 | 22218-4304 | 22218-4316 |
| NE020 | 22412-1 | 22412-3 | 22412-4304 | 22412-4316 |
| NE030 | 22412-1 | 22412-3 | 22412-4304 | 22412-4316 |
| NE040 | 22412-1 | 22412-3 | 22412-4304 | 22412-4316 |
| NE050 | 22822-1 | 22822-3 | 22822-4304 | 22822-4316 |
| NE060 | 22822-1 | 22822-3 | 22822-4304 | 22822-4316 |
| NE080 | 22822-1 | 22822-3 | 22822-4304 | 22822-4316 |
| TM061 | 22908-1 | 22908-3 | 22908-4304 | 22908-4316 |
| TM081 | 22908-1 | 22908-3 | 22908-4304 | 22908-4316 |
| HC101 | 23857-1 | 23857-3 | 23857-4304 | 23857-4316 |
| HC121 | 23857-1 | 23857-3 | 23857-4304 | 23857-4316 |
| HC151 | 23857-1 | 23857-3 | 23857-4304 | 23857-4316 |
| HC20C | 23857-1 | 23857-3 | 23857-4304 | 23857-4316 |
| HC201 | 23864-1 | 23864-3 | 23864-4304 | 23864-4316 |

Get the Edge... Get Thermal Edge

Temperature Control Solutions for Electrical Enclosures

(972) 580-0200 • www.thermaledge.com • thermalinfo@thermaledge.com



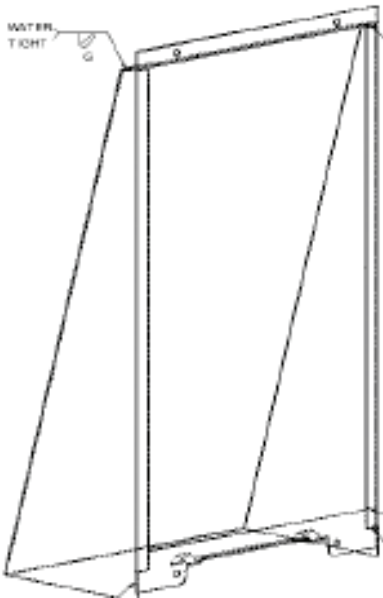
Thermal Edge Inc.™

Designed to be factory installed prior to delivery

FILTER HOOD

F1: Painted, F11: Stainless Steel, F12: Aluminum

- Minimize water intrusion through filter
- High flow wash down protection
- Retains flat filter
- Painted or Stainless Steel

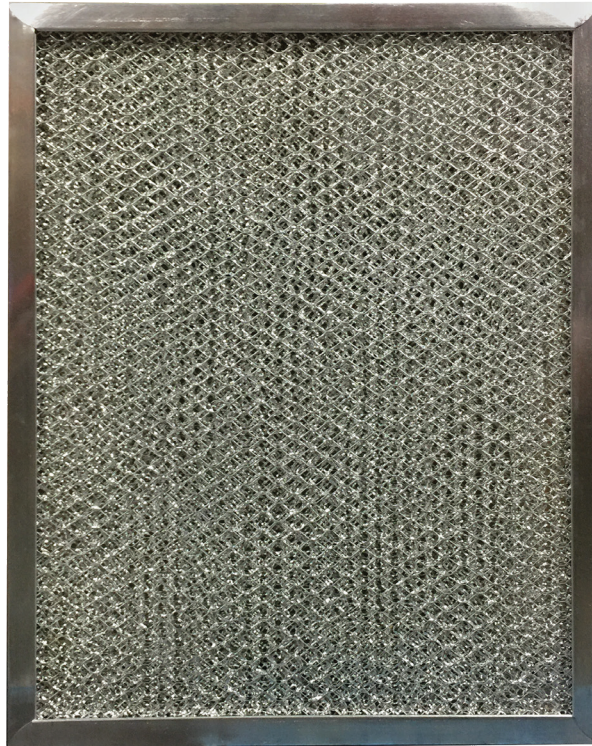


Get the Edge... Get Thermal Edge

Temperature Control Solutions for Electrical Enclosures

(972) 580-0200 • www.thermaledge.com • thermalinfo@thermaledge.com

EXPANDED ALUMINUM REPLACEMENT FILTERS



| A/C Unit | Part Number | Size | Description | Quantity |
|----------|-------------|-------------------|---------------------------------------|----------|
| NE010 | 44200 | 7.5" W x 9" H | Exp. alum, 250 micron, 60% efficiency | 12 |
| NE015 | 44200 | 7.5" W x 9" H | Exp. alum, 250 micron, 60% efficiency | 12 |
| CS020 | 44201 | 9" W x 11" H | Exp. alum, 250 micron, 60% efficiency | 12 |
| NE020 | 44202 | 7.3" W x 11.3" H | Exp. alum, 250 micron, 60% efficiency | 12 |
| NE030 | 44202 | 7.3" W x 11.3" H | Exp. alum, 250 micron, 60% efficiency | 12 |
| NE040 | 44202 | 7.3" W x 11.3" H | Exp. alum, 250 micron, 60% efficiency | 12 |
| NE050 | 44203 | 10.3" W x 16.3" H | Exp. alum, 250 micron, 60% efficiency | 12 |
| NE060 | 44203 | 10.3" W x 16.3" H | Exp. alum, 250 micron, 60% efficiency | 12 |
| NE080 | 44203 | 10.3" W x 16.3" H | Exp. alum, 250 micron, 60% efficiency | 12 |
| TM061 | 44218 | 19 "W x 13.75"H | Exp. alum, 250 micron, 60% efficiency | 12 |
| TM081 | 44218 | 19 "W x 13.75"H | Exp. alum, 250 micron, 60% efficiency | 12 |
| HC101 | 44204 | 14" W x 24" H | Exp. alum, 250 micron, 60% efficiency | 12 |
| HC121 | 44204 | 14" W x 24" H | Exp. alum, 250 micron, 60% efficiency | 12 |
| HC151 | 44204 | 14" W x 24" H | Exp. alum, 250 micron, 60% efficiency | 12 |
| HC201 | 44260 | 14" W x 13.33" H | Exp. alum, 250 micron, 60% efficiency | 12 |

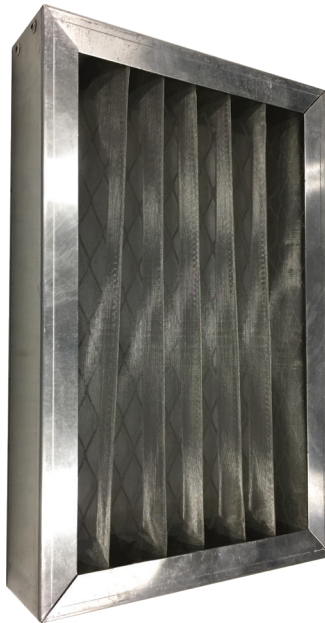
Get the Edge... Get Thermal Edge

Temperature Control Solutions for Electrical Enclosures

(972) 580-0200 • www.thermaledge.com • thermalinfo@thermaledge.com

REPLACEMENT 2" PLEATED FILTER

Thermal Edge offers extended surface, 2" deep replacement filters. These 250 micron stainless steel mesh filters, with 94% efficiency, extend the filter capacity 400%. The filters are washable and reusable. Life expectancy is determined by the environment and the cleaning procedures. Stainless steel filters are preferred in wash-down applications over aluminum filters.



2" Pleated Filter

| A/C Unit | Part Number | Size | Description | Quantity |
|----------|-------------|-------------------|---|----------|
| CS020 | 44250 | 9" W x 11" H | 304 SS mesh, 250 micron, 94% efficiency | 4 |
| NE020 | 44251 | 7.3" W x 11.3" H | 304 SS mesh, 250 micron, 94% efficiency | 4 |
| NE030 | 44251 | 7.3" W x 11.3" H | 304 SS mesh, 250 micron, 94% efficiency | 4 |
| NE040 | 44251 | 7.3" W x 11.3" H | 304 SS mesh, 250 micron, 94% efficiency | 4 |
| NE050 | 44252 | 10.3" W x 16.3" H | 304 SS mesh, 250 micron, 94% efficiency | 4 |
| NE060 | 44252 | 10.3" W x 16.3" H | 304 SS mesh, 250 micron, 94% efficiency | 4 |
| NE080 | 44252 | 10.3" W x 16.3" H | 304 SS mesh, 250 micron, 94% efficiency | 4 |
| TM061 | 44258 | 19" W x 13.75" H | 304 SS mesh, 250 micron, 94% efficiency | 4 |
| TM081 | 44258 | 19" W x 13.75" H | 304 SS mesh, 250 micron, 94% efficiency | 4 |
| HC101 | 44254 | 14" W x 24" H | 304 SS mesh, 250 micron, 94% efficiency | 4 |
| HC121 | 44254 | 14" W x 24" H | 304 SS mesh, 250 micron, 94% efficiency | 4 |
| HC151 | 44254 | 14" W x 24" H | 304 SS mesh, 250 micron, 94% efficiency | 4 |
| HC201 | 44261 | 14" W x 13.33" H | 304 SS mesh, 250 micron, 94% efficiency | 6 |

Get the Edge... Get Thermal Edge

Temperature Control Solutions for Electrical Enclosures

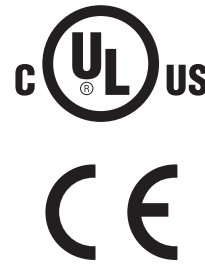
(972) 580-0200 • www.thermaledge.com • thermalinfo@thermaledge.com



Thermal Edge Inc.™

CS SERIES AIR CONDITIONERS

- Active Condensate Evaporation is standard
- Fits on a 7" or 10" deep enclosure
- Available in UL Types 12, 4, 4X
- Fully programmable digital controller with temperature and pressure monitors for a **smarter** air conditioner
- 115V, 230V, 48VDC in 1000 BTUH
- 1000 BTUH
- 2000 BTUH



NE SERIES AIR CONDITIONERS

- Active Condensate Evaporation is standard
- Fits on a 12" deep enclosure
- Available in UL Types 12, 4, 4X and Hazardous Environment applications
- Fully programmable digital controller with temperature and pressure monitors for a **smarter** air conditioner
- 115V, 230V, 460V, 48VDC in 4000 BTUH
- 1000 BTUH
- 1500 BTUH
- 2000 BTUH
- 3000 BTUH
- 4000 BTUH
- 5000 BTUH
- 6000 BTUH
- 8000 BTUH



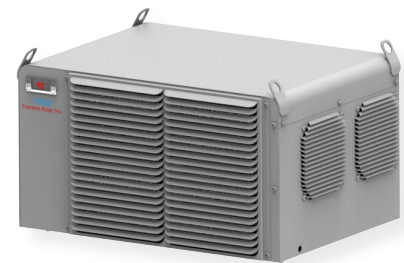
HC SERIES AIR CONDITIONERS

- Active Condensate Evaporation is standard
- Available in UL Types 12, 4, 4X and Hazardous Environment applications
- Fully programmable digital controller with temperature and pressure monitors for a **smarter** air conditioner
- 115V, 230V, 460V
- 10,000 BTUH
- 12,000 BTUH
- 15,000 BTUH
- 20,000 BTUH



TM SERIES AIR CONDITIONERS

- Top Mounted Enclosure Air Conditioners
- Active Condensate Evaporation is standard
- Available in UL Types 12, 4, 4X
- Fully programmable digital controller with temperature and pressure monitors for a **smarter** air conditioner
- 115V, 230V, 460V
- 6000 BTUH
- 8000 BTUH



(972) 580-0200

www.thermaledge.com

thermalinfo@thermaledge.com



MADE IN AMERICA MATTERS...